

## Tutela V4 - Release Notes

<u>Version</u>	<u>Description</u>	<u>Release Date</u>
01	Issue	15/06/2016
1.1	Issue	29/09/2016
1.2	Issue	03/02/2017

## Contents

1.0 Overview .....	2
2.0 Additional Features .....	2
4.0 Removed/Retired Features .....	3
5.0 Bug Fixes .....	3
6.0 System Requirements .....	3

## 1.0 Overview

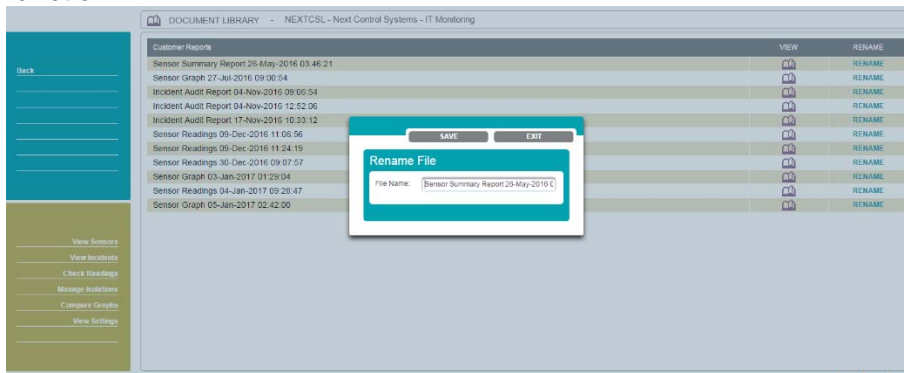
1.1 This document outlines the additional features, Improvements, and bug fixes to the 4<sup>th</sup> generation website, version 4.1.1.

1.2 This version as with all previous versions provides remote access to the automatic recorded data and alarm exceptions of the sensing probes installed in the customer’s facility. Customers can gain access to their data via the secure Tutela V4 web base application hosted by Tutela medical. The data records are published in real time via these secure web pages. Remote site hosting, maintenance and validation of electronic data records are regulated through Tutela Medical **UK ISO 9001 Business Management System**.

## 2.0 Additional Features

2.1 Access to Tutela V3 legacy user activity.

2.2 Report Generation – The user can now rename their reports with a report rename function.



## 3.0 Improvements/Enhancements

3.1 The word probes have been replaced with the word sensor throughout the website. (CR 043)

3.2 The alarm and alerts arrows have been replaced with buttons to navigate between the pages. (CR042).

3.3 Sensors with active alarms that have not been audited display as a flashing red box in row, replacing the icon flashing. (CR041)

3.4 The word continue has been replaced by the word Report. (CR040)

### 3.5 Progress wheel is now shown in the title bar. (CR047)



## 4.0 Removed/Retired Features

4.1 None.

## 5.0 Bug Fixes

- 5.1 Sensor List - Battery icon didn't display the same colour icon as Tutela V3, if no data was available to read.
- 5.2 Sensor List - Open circuit values are now ignored and not plotted by the graphing or data values.
- 5.3 Sensor List - Exporting to a pdf now shows an MKT column if enabled.
- 5.4 Sensor List - Reports of data values or graphs timestamp has been corrected to sites local time.
- 5.5 Report Creation - User is prompted to comment on user reports before creation.
- 5.6 Check Readings - Users reports now require a secondary signoff, and all sites a have a report pending directory.
- 5.7 Check Readings - Users with a report permission can now perform check readings.
- 5.8 Contact management – Users can no longer select contact options (SMS, email, mobile, phone) which have not been configured for the contact.
- 5.8 Settings – The values column width has been increased to stop wraparound.
- 5.9 Login – Amendment of expired logging prompt (CR 062).
- 5.10 User Activity – The user audit now shows the system name and action rather than just asset ID.
- 5.11 Manage users - A standard user can now amend their own password and pin code through edit profile function.

## 6.0 System Requirements

6.1 Operating Systems and browsers compatibility is as follows:

Yes
No

	Windows 10	Windows 7 64-Bit	Windows 7	Windows XP
Edge		N/A	N/A	N/A
IE 11			N/A	N/A
IE 10	N/A		N/A	N/A
IE 9 x 64	N/A			N/A
IE 9	N/A			N/A
IE 8	N/A			
Chrome 51				
Chrome 50				
Chrome 49				
Chrome 48		N/A		
Chrome 47		N/A		
Chrome 46		N/A		
Chrome 45		N/A		
Chrome 44		N/A		
Chrome 43		N/A		
Chrome 42	N/A	N/A		
Chrome 41	N/A	N/A		
FireFox 47				
FireFox 46				
FireFox 45				
Firefox 44	N/A	N/A		
Firefox 43	N/A	N/A		
Firefox 42	N/A	N/A		
Firefox 41	N/A	N/A	N/A	N/A
Firefox 40	N/A	N/A	N/A	N/A
Firefox 39	N/A	N/A	N/A	N/A
Firefox 38	N/A	N/A	N/A	N/A
Opera 37			N/A	N/A
Opera 36				
Opera 35				
Safari 9	N/A	N/A	N/A	N/A
Safari 8	N/A	N/A	N/A	N/A
Safari 7	N/A	N/A	N/A	N/A
Safari 6.2	N/A	N/A	N/A	N/A

	MAC 10.11	MAC 10.10	MAC 10.9	MAC 10.8
Edge	N/A	N/A	N/A	N/A
IE 11	N/A	N/A	N/A	N/A

IE 10	N/A	N/A	N/A	N/A
IE 9 x 64	N/A	N/A	N/A	N/A
IE 9	N/A	N/A	N/A	N/A
IE 8	N/A	N/A	N/A	N/A
Chrome 51				
Chrome 50				
Chrome 49				
Chrome 48				
Chrome 47				
Chrome 46				
Chrome 45				
Chrome 44				
Chrome 43				
Chrome 42				
Chrome 41				
FireFox 47				
FireFox 46				
FireFox 45				
Firefox 44				
Firefox 43				
Firefox 42				
Firefox 41	N/A	N/A	N/A	N/A
Firefox 40	N/A	N/A	N/A	N/A
Firefox 39	N/A	N/A	N/A	N/A
Firefox 38	N/A	N/A	N/A	N/A
Opera 37				N/A
Opera 36				
Opera 35				
Safari 9			N/A	N/A
Safari 8	N/A		N/A	N/A
Safari 7	N/A	N/A		N/A
Safari 6.2	N/A	N/A	N/A	