



Tutela V4.1.3 release notes

## contents

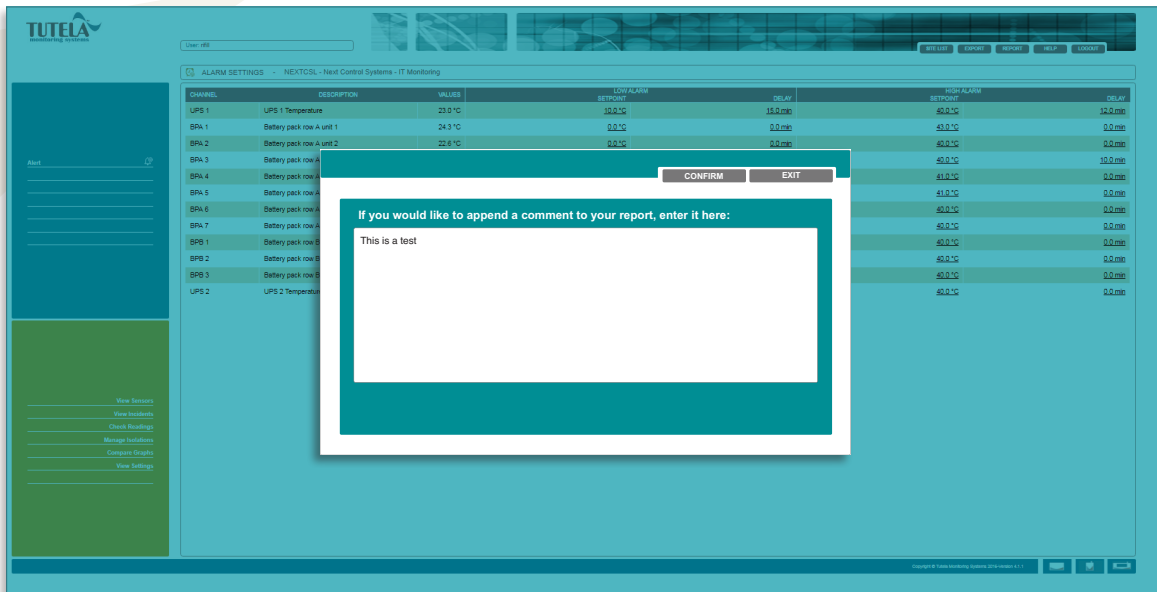
<b>1.0 Overview</b>	<b>2</b>
<b>2.0 Additional Features</b>	<b>2</b>
<b>4.0 Removed/Retired Features</b>	<b>3</b>
<b>5.0 Bug Fixes</b>	<b>3</b>
<b>6.0 System Requirements</b>	<b>4</b>

## 1.0 Overview

- 1.1 This document outlines the additional features, Improvements, and bug fixes to the 4th generation website, version 4.1.2.
- 1.2 This version as with all previous versions provides remote access to the automatic recorded data and alarm exceptions of the sensing probes installed in the customer's facility. Customers can gain access to their data via the secure Tutela V4 web base application hosted by Tutela medical. The data records are published in real time via these secure web pages. Remote site hosting, maintenance and validation of electronic data records are regulated through Tutela Medical UK ISO 9001 Business Management System.

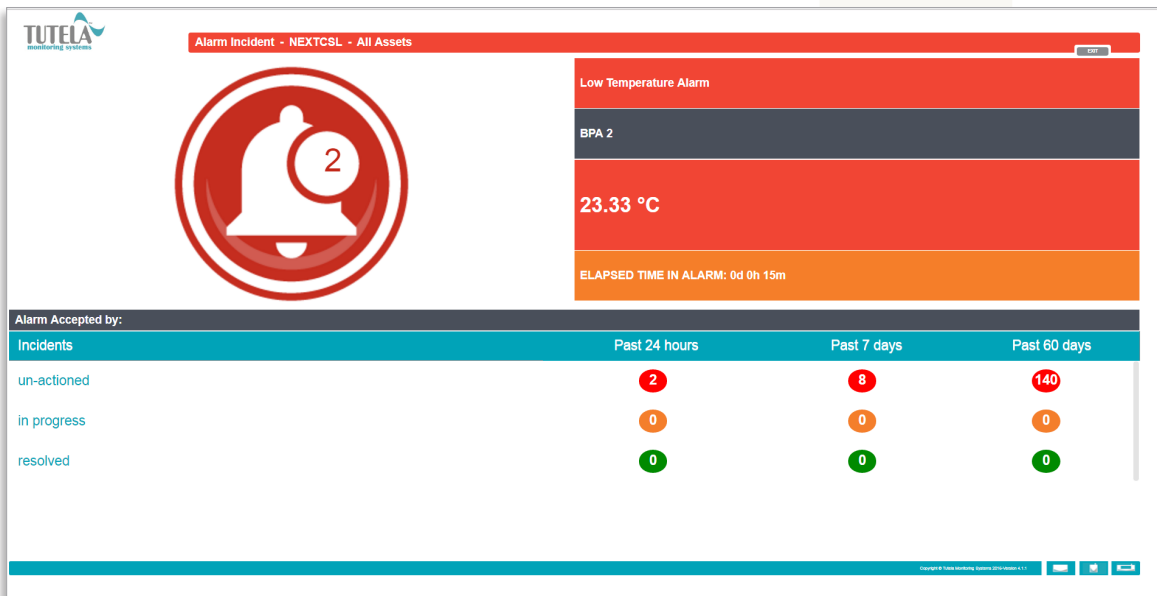
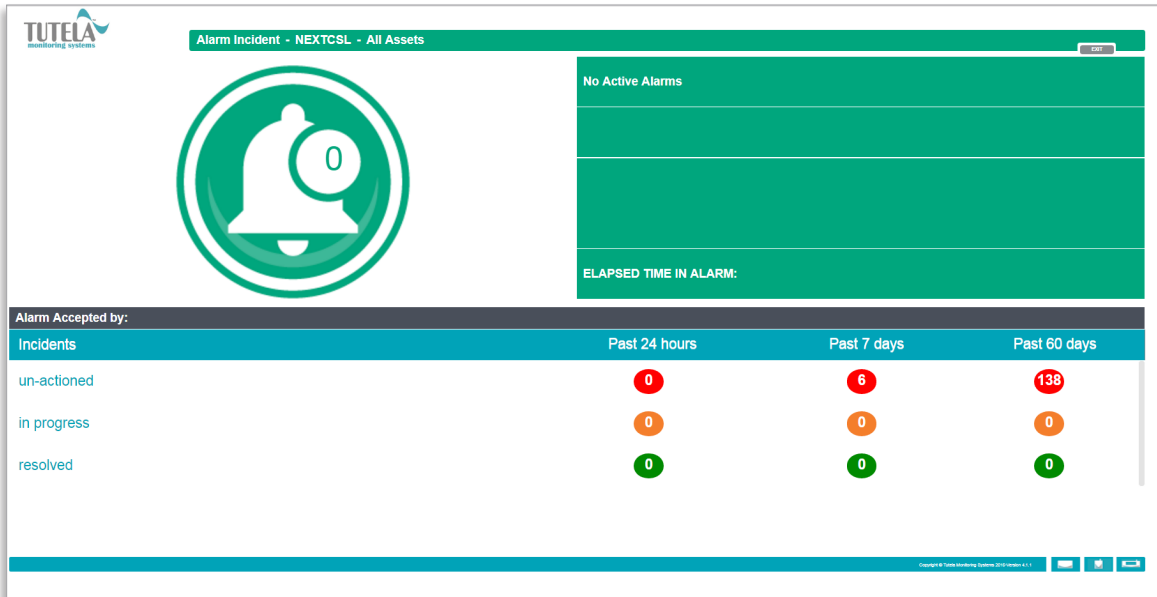
## 2.0 Additional Features

- 2.1 A comment dialogue box has been added to allow the users to add reasons for changing the alarm and alert settings. The new dialogue box appears, before pin code dialogue. (CR 075).



2.2 Search Functionality to allow Support to easily locate the customer from the customer list. The search is now a wildcard search instead of based on the first letters of the customer's name. (CR 53).

2.3 Alarm Dashboards, A simple status dashboard that gives real time status of the alarms affecting user's cold chain at a glance. Plus giving insight into the status of outstanding incidents over the last 60 days.



## 3.0 Improvements/Enhancements

---

- 3.1** Error Page – An error page now directs the user back to the login page.
- 3.2** Graphing - The Graph Y axis has been fixed to display more user-friendly intervals. (CR 089).
- 3.3** Settings - If a user's attempted to adjust settings fails, a message now appears to inform them of the failure.
- 3.4** Sites & Departments - Improvement to the speed of the sensor list page loading.
- 3.4** User Activity - departmental activity audits are now shown in the default selection.
- 3.5** User Management - All users can now amend their own user name and password.
- 3.6** User Management – pin code failure count can be reset by disabling and enabling the user.

## 4.0 Removed/Retired Features

---

- 4.1** None.

## 5.0 Bug Fixes

---

- 5.1** Audit Reports - Inconsistencies in time zones on reports has been corrected.
- 5.2** Audit Reports - Not all standard comments from sites were available for selection whilst signing off incident audits.
- 5.3** Graphing – Inconsistencies in the axis margin when a previous or next day was selected.
- 5.4** Graphing - Time zone offset bug displaying data from a previous day is fixed.

- 5.5** Library – Customer admins could add files to the global directories.
- 5.6** Library – User admins could remove files from the global directories.
- 5.7** Reports – Had the incorrect address in the footer.
- 5.8** Secondary Signoff – Reports requiring a secondary signoff were not saving automatically to the library.
- 5.9** Sensor List - Battery icon didn't display the same colour icon as Tutela V3, if no data was available to read.
- 5.10** Sensor List – the Max, Min an average was inconsistent for customers with background minute logging.
- 5.11** Setting – The settings export didn't include the high and low alarm delays.
- 5.12** User Audits – Audits for settings amendments now only appear in the relevant department.
- 5.13** User Management – When a user changes the username all permissions are now retained.
- 5.14** User Management - A standard user can now amend their own password and pin code through edit profile function.

## 6.1 Operating Systems and browsers compatibility is as follows:

■ yes   
 ■ no   
 ■ n/a

PC	Windows 10	Windows 7 64-Bit	Windows 7	Windows XP
Edge	yes	n/a	n/a	n/a
IE 11	yes	yes	n/a	n/a
IE 10	n/a	yes	n/a	n/a
IE 9 x 64	n/a	no	no	n/a
IE 9	n/a	no	no	n/a
IE 8	n/a	no	no	no
Chrome 51	yes	yes	yes	no
Chrome 50	yes	yes	yes	no
Chrome 49	yes	yes	yes	yes
Chrome 48	no	n/a	yes	yes
Chrome 47	no	n/a	no	no
Chrome 46	no	n/a	no	no
Chrome 45	no	n/a	no	no
Chrome 44	no	n/a	no	no
Chrome 43	no	n/a	no	no
Chrome 42	n/a	n/a	no	no
Chrome 41	n/a	n/a	no	no
FireFox 47	yes	yes	yes	no
FireFox 46	yes	yes	yes	yes
FireFox 45	yes	yes	yes	yes
FireFox 44	n/a	n/a	yes	no
FireFox 43	n/a	n/a	yes	no
FireFox 42	n/a	n/a	yes	no
FireFox 41	n/a	n/a	n/a	n/a
FireFox 40	n/a	n/a	n/a	n/a

6.1 Operating Systems and browsers compatibility is as follows:

■ yes  
 ■ no  
 ■ n/a

	Windows 10	Windows 7 64-Bit	Windows 7	Windows XP
Firefox 39				
Firefox 38				
Opera 37				
Opera 36				
Opera 35				
Safari 9				
Safari 8				
Safari 7				
Safari 6.2				



## 6.1 Operating Systems and browsers compatibility is as follows:

■ yes   
 ■ no   
 ■ n/a

MAC	MAC 10.11	MAC 10.10	MAC 10.9	MAC 10.8
Edge	gray	gray	gray	gray
IE 11	gray	gray	gray	gray
IE 10	gray	gray	gray	gray
IE 9 x 64	gray	gray	gray	gray
IE 9	gray	gray	gray	gray
IE 8	gray	gray	gray	gray
Chrome 51	green	green	green	red
Chrome 50	green	green	red	red
Chrome 49	red	green	red	red
Chrome 48	red	green	red	green
Chrome 47	red	red	red	red
Chrome 46	red	red	red	red
Chrome 45	red	red	red	red
Chrome 44	red	red	red	red
Chrome 43	red	red	red	red
Chrome 42	red	red	red	red
Chrome 41	red	red	red	red
FireFox 47	green	green	green	green
FireFox 46	green	green	green	green
FireFox 45	green	green	green	green
FireFox 44	green	green	green	green
FireFox 43	green	green	green	green
FireFox 42	green	green	green	green
FireFox 41	gray	gray	gray	gray
FireFox 40	gray	gray	gray	gray

6.1 Operating Systems and browsers compatibility is as follows:

**yes**
 **no**
 **n/a**

	Windows 10	Windows 7 64-Bit	Windows 7	Windows XP
Firefox 39				
Firefox 38				
Opera 37				
Opera 36				
Opera 35				
Safari 9				
Safari 8				
Safari 7				
Safari 6.2				