

**Connected Automated Monitoring +
V4.3.5.4
(Formerly known as Tutela)
Release Notes**

CONFIDENTIALITY

The information contained within this manual is proprietary. Ownership is solely vested in Checkit Europe Limited.

This information may not be copied or reproduced or passed on to any third party without the prior written permission of Checkit Europe Limited.

The Checkit system Hardware and Software whether whole or in part are subject to the laws of copyright.

The adoption and/or use of techniques functionality and know how embodied in this document, the hardware and/or software source and/or runtime code modules may not be copied or utilized in any way by third parties without the prior written consent of Checkit Europe Limited.

<u>Version</u>	<u>Description</u>	<u>Release Date</u>
01	Issue	15/06/2016
1.1	Issue	29/09/2016
1.2	Issue	03/02/2017
1.3	Issue	04/07/2017
1.4	Issue	03/11/2017
1.5	Issue	01/03/2018
1.6	Issue	10/10/2018
2.0	Issue	01/06/2020
2.1	Issue	21/09/2020
2.2	Issue	09/11/2020
3.1	Issue	14/09/2021
3.2	Issue	23/03/2021
3.2.1	Issue	07/07/2022
3.3	Issue	08/09/2022
3.3.1	Issue	21/09/2022
3.3.2	Issue	18/10/2022
3.3.3	Issue	30/11/2022
3.3.4	Issue	08/02/2023
3.3.5	Issue	16/03/2023
3.3.6	Issue	21/03/2023
3.3.7	Issue	26/06/2023
3.3.8	Issue	06/09/2023
3.3.9	Issue	26/10/2023
3.3.10	Issue	30/10/2023

3.4	Issue	13/11/2023
3.4.1	Issue	08/01/2024
3.5.0	Issue	15/04/2024
3.5.1	Issue	22/04/2024
3.5.2	Issue	29/04/2024
3.5.3	Issue	07/05/2024
3.5.4	Issue	22/05/2024

Contents

1.0 Overview	6
2.0 Additional Features.....	6
3.0 Improvements/Enhancements	6
4.0 Removed/Retired Features.....	6
5.0 Bug Fixes	6
6.0 System Requirements	8

1.0 Overview

1.1 This document outlines the additional features, Improvements, and bug fixes to the 4th generation website.

1.2 This version as with all previous versions provides remote access to the automatic recorded data and alarm exceptions of the sensing probes installed in the customer's facility. Customers can gain access to their data via the secure Connected Automated Monitoring web base application. The data records are published in real-time via these secure web pages. Remote site hosting, maintenance, and validation of electronic data records are regulated through Tutela Medical UK ISO 9001 Business Management System.

2.0 Additional Features

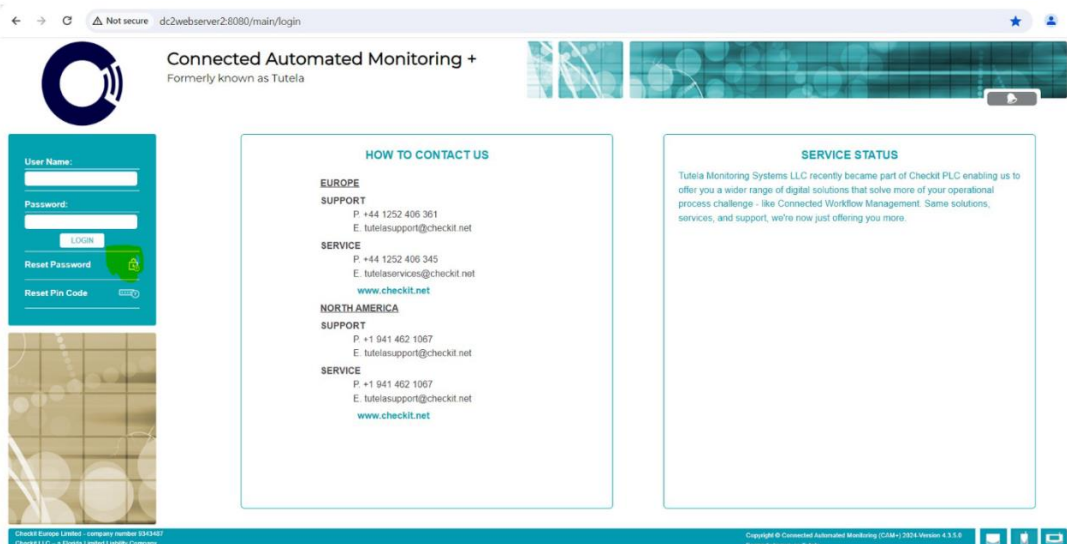
3.0 Improvements/Enhancements

1. Website speed improvement so that pages load faster.
2. Validation is added to file upload features on the website to allow only valid characters in the file names.
Valid characters are:
letters, numbers, underscores, periods, and hyphens
3. Single-time loading of configuration values, just to remove extra computation while loading again.

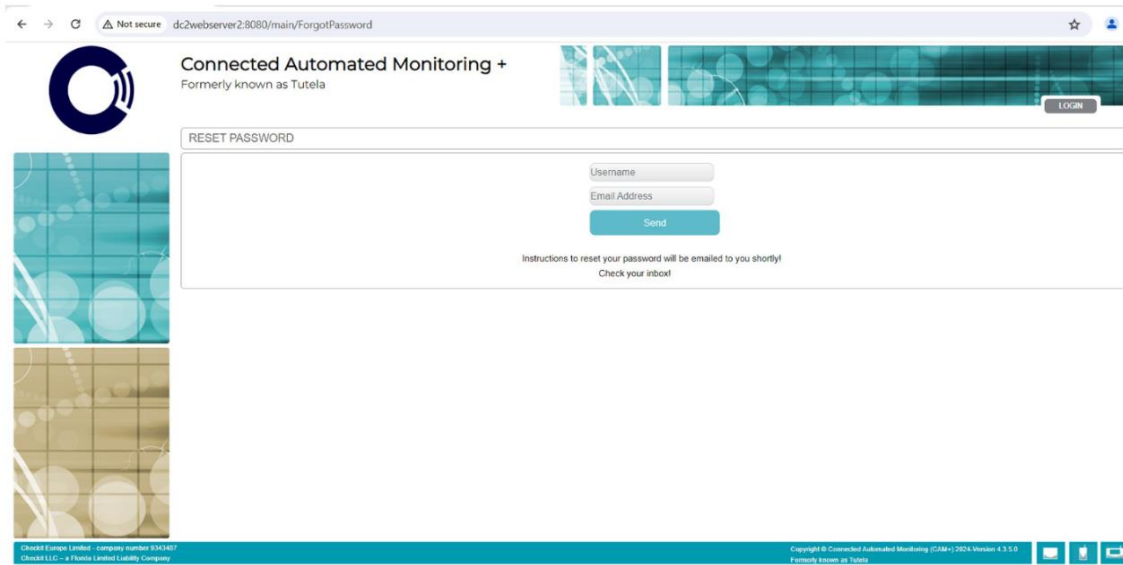
4.0 Removed/Retired Features

5.0 Bug Fixes

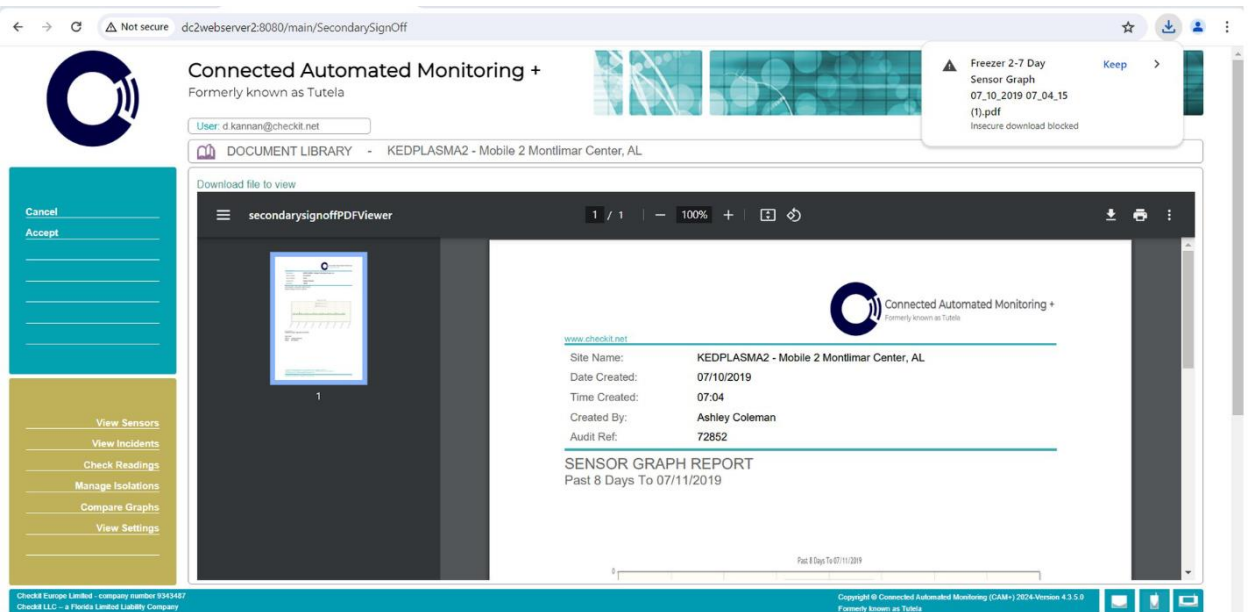
1. Session logout message removed from password and pincode reset pages so that normal page can be viewed.



The screenshot shows the login page for Connected Automated Monitoring. The browser address bar displays "dc2webserver2.8080/main/login". The page header includes the company logo and name "Connected Automated Monitoring + Formerly known as Tutela". The main content area is divided into three columns: a login form on the left with fields for "User Name" and "Password", and buttons for "LOGIN", "Reset Password", and "Reset Pin Code"; a central "HOW TO CONTACT US" section with contact information for EUROPE, SERVICE, and NORTH AMERICA; and a right-hand "SERVICE STATUS" section with a message about Tutela Monitoring Systems LLC becoming part of Checkit PLC. The footer contains copyright information and version details.



2. Fix for the PDF file viewer on “Reports pending secondary sign off” page so that the files can be viewed.





6.0 System Requirements

Yes
No

	Windows 10	Windows 8.1	Windows 8	Windows 7 64-Bit	Windows 7	Windows XP
Edge 81	Yes	N/A	N/A	N/A	N/A	N/A
Edge 80	Yes	N/A	N/A	N/A	N/A	N/A
Edge 79	Yes	N/A	N/A	N/A	N/A	N/A
Edge 18	Yes	N/A	N/A	N/A	N/A	N/A
Edge 17	Yes	N/A	N/A	N/A	N/A	N/A
Edge 16	Yes	N/A	N/A	N/A	N/A	N/A
Edge 15	Yes	N/A	N/A	N/A	N/A	N/A
IE 11	Yes	Yes	N/A	Yes	N/A	N/A
IE 10	N/A	N/A	No	No	N/A	N/A
IE 9 x64	N/A	N/A	N/A	No	N/A	N/A
IE 9	N/A	N/A	N/A	No	No	N/A
IE 8	N/A	N/A	N/A	N/A	No	No
Chrome 81	Yes	Yes	Yes	Yes	N/A	N/A
Chrome 80	Yes	Yes	Yes	Yes	N/A	N/A
Chrome 79	Yes	Yes	Yes	Yes	N/A	N/A
Chrome 78	Yes	Yes	Yes	Yes	N/A	N/A
Chrome 77	Yes	Yes	Yes	Yes	N/A	N/A
Chrome 76	Yes	Yes	Yes	Yes	N/A	N/A
Chrome 75	Yes	Yes	Yes	Yes	N/A	N/A
Chrome 74	Yes	Yes	Yes	Yes	N/A	N/A
Chrome 73	Yes	Yes	Yes	Yes	N/A	N/A
Chrome 72	Yes	Yes	Yes	Yes	Yes	N/A
Chrome 71	Yes	Yes	Yes	Yes	Yes	N/A
Chrome 70	Yes	Yes	Yes	Yes	Yes	N/A
Chrome 69	Yes	Yes	Yes	Yes	Yes	N/A
Chrome 68	Yes	Yes	Yes	Yes	Yes	N/A
Chrome 67	Yes	Yes	Yes	Yes	Yes	N/A
Chrome 66	Yes	Yes	Yes	Yes	Yes	N/A
Chrome 65	Yes	Yes	Yes	Yes	Yes	N/A
Chrome 64	Yes	Yes	Yes	Yes	Yes	N/A
Chrome 63	Yes	Yes	Yes	Yes	Yes	N/A
Chrome 62	Yes	Yes	Yes	Yes	Yes	N/A
Chrome 61	Yes	Yes	Yes	Yes	Yes	N/A
Chrome 60	Yes	Yes	Yes	Yes	Yes	N/A
Chrome 59	Yes	Yes	Yes	Yes	Yes	N/A
Chrome 58	Yes	Yes	Yes	Yes	Yes	N/A
Chrome 57	Yes	Yes	Yes	Yes	Yes	N/A
Chrome 56	Yes	Yes	Yes	Yes	Yes	N/A



Chrome 55						N/A
Chrome 54						N/A
Chrome 53						N/A
Chrome 52						N/A
Chrome 51						N/A
Chrome 50						N/A
Chrome 49						
Chrome 48						
Chrome 47						
Chrome 46						
Chrome 45						
Chrome 44						
Chrome 43						
Chrome 42	N/A					
Chrome 41	N/A					
FireFox 76		N/A	N/A		N/A	N/A
FireFox 75			N/A		N/A	N/A
FireFox 74		N/A	N/A		N/A	N/A
FireFox 73		N/A	N/A		N/A	N/A
FireFox 72					N/A	N/A
FireFox 71					N/A	N/A
FireFox 70					N/A	N/A
FireFox 69					N/A	N/A
FireFox 68					N/A	N/A
FireFox 67					N/A	N/A
FireFox 66					N/A	N/A
FireFox 65						N/A
FireFox 64						N/A
FireFox 63						N/A
FireFox 62						N/A
FireFox 61						N/A
FireFox 60						N/A
FireFox 59						N/A
FireFox 58						N/A
FireFox 57						N/A
FireFox 56						N/A
FireFox 55						N/A
FireFox 54						N/A
FireFox 53						N/A
FireFox 52						N/A
FireFox 51						N/A
FireFox 50						N/A
FireFox 49						N/A
FireFox 48						N/A
FireFox 47						N/A

FireFox 46						
FireFox 45						
FireFox 44						
FireFox 43						
FireFox 42						
FireFox 41						
FireFox 40						
FireFox 39						
FireFox 38						
Opera 68					N/A	N/A
Opera 67					N/A	N/A
Opera 66					N/A	N/A
Opera 65					N/A	N/A
Opera 64					N/A	N/A
Opera 63					N/A	N/A
Opera 60					N/A	N/A
Opera 58					N/A	N/A
Opera 57					N/A	N/A
Opera 56					N/A	N/A
Opera 55					N/A	N/A
Opera 54						N/A
Opera 53					N/A	N/A
Opera 52					N/A	N/A
Opera 51					N/A	N/A
Opera 50					N/A	N/A
Opera 49					N/A	N/A
Opera 48						N/A
Opera 47						N/A
Opera 46						N/A
Opera 45						N/A
Opera 44						N/A
Opera 43						N/A
Opera 42						N/A
Opera 41						N/A
Opera 40						N/A
Opera 39						N/A
Opera 38						N/A
Opera 37					N/A	N/A
Opera 36						
Opera 35						
Safari 13	N/A	N/A	N/A	N/A	N/A	N/A
Safari 12	N/A	N/A	N/A	N/A	N/A	N/A
Safari 11	N/A	N/A	N/A	N/A	N/A	N/A
Safari 10.1	N/A	N/A	N/A	N/A	N/A	N/A
Safari 9	N/A	N/A	N/A	N/A	N/A	N/A



Safari 8	N/A	N/A	N/A	N/A	N/A	N/A	N/A
Safari 7	N/A	N/A	N/A	N/A	N/A	N/A	N/A
Safari 6.2	N/A	N/A	N/A	N/A	N/A	N/A	N/A

	Mac 10.15	Mac 10.14	Mac 10.13	Mac 10.12	Mac 10.11	Mac 10.10	Mac 10.9	Mac 10.8
Edge 80		N/A	N/A	N/A	N/A	N/A	N/A	N/A
Edge 79		N/A	N/A	N/A	N/A	N/A	N/A	N/A
Chrome 81					N/A	N/A	N/A	N/A
Chrome 80 x64						N/A	N/A	N/A
Chrome 79						N/A	N/A	N/A
Chrome 78 x64						N/A	N/A	N/A
Chrome 77 x64	N/A						N/A	N/A
Chrome 76 x64	N/A						N/A	N/A
Chrome 75 x64	N/A						N/A	N/A
Chrome 74 x64	N/A						N/A	N/A
Chrome 73 x64	N/A						N/A	N/A
Chrome 72 x64	N/A						N/A	N/A
Chrome 71 x64	N/A						N/A	N/A
Chrome 70 x64	N/A						N/A	N/A
Chrome 69 x64	N/A						N/A	N/A
Chrome 68 x64	N/A	N/A					N/A	N/A
Chrome 67 x64	N/A	N/A					N/A	N/A
Chrome 66 x64	N/A	N/A					N/A	N/A
Chrome 65 x64	N/A	N/A					N/A	N/A
Chrome 64 x64	N/A	N/A					N/A	N/A
Chrome 63 x64	N/A	N/A					N/A	N/A
Chrome 62 x64	N/A	N/A					N/A	N/A
Chrome 61 x64	N/A	N/A					N/A	N/A
Chrome 60 x64	N/A	N/A					N/A	N/A
Chrome 59 x64	N/A	N/A					N/A	N/A
Chrome 58 x64	N/A	N/A					N/A	N/A
Chrome 57 x64	N/A	N/A					N/A	N/A
Chrome 56 x64	N/A	N/A					N/A	N/A
Chrome 55 x64	N/A	N/A					N/A	N/A
Chrome 54 x64	N/A	N/A	N/A				N/A	N/A
Chrome 53 x64	N/A	N/A	N/A				N/A	N/A
Chrome 52 x64	N/A	N/A	N/A				N/A	N/A
Chrome 51 x64	N/A	N/A	N/A	N/A			N/A	N/A
Chrome 50 x64	N/A	N/A	N/A	N/A				N/A
Chrome 49 x64	N/A	N/A	N/A	N/A				
Chrome 48 x64	N/A	N/A	N/A	N/A				

Chrome 47 x64	N/A	N/A	N/A	N/A				
Chrome 46 x64	N/A	N/A	N/A	N/A				
Chrome 45 x64	N/A	N/A	N/A	N/A				
Chrome 44 x64	N/A	N/A	N/A	N/A				
Chrome 43 x64	N/A	N/A	N/A	N/A				
Chrome 42 x64	N/A	N/A	N/A	N/A				
Chrome 41 x64	N/A	N/A	N/A	N/A				
FireFox 76		N/A	N/A	N/A	N/A	N/A	N/A	N/A
FireFox 75					N/A	N/A	N/A	N/A
FireFox 74					N/A	N/A	N/A	N/A
FireFox 73						N/A	N/A	N/A
FireFox 72					N/A	N/A	N/A	N/A
FireFox 71 x64					N/A	N/A	N/A	N/A
FireFox 70						N/A	N/A	N/A
FireFox 69	N/A						N/A	N/A
FireFox 68	N/A						N/A	N/A
FireFox 67	N/A						N/A	N/A
FireFox 66	N/A						N/A	N/A
FireFox 65	N/A						N/A	N/A
FireFox 64	N/A						N/A	N/A
FireFox 63	N/A						N/A	N/A
FireFox 62	N/A						N/A	N/A
FireFox 61	N/A	N/A					N/A	N/A
FireFox 60	N/A	N/A					N/A	N/A
FireFox 59	N/A	N/A						N/A
FireFox 58	N/A	N/A					N/A	N/A
FireFox 57	N/A	N/A						N/A
FireFox 56	N/A	N/A						N/A
FireFox 55	N/A	N/A	N/A					N/A
FireFox 54	N/A	N/A	N/A					N/A
FireFox 53	N/A	N/A	N/A					N/A
FireFox 52	N/A	N/A	N/A					N/A
FireFox 51	N/A	N/A	N/A					N/A
FireFox 50	N/A	N/A	N/A					N/A
FireFox 49	N/A	N/A	N/A					N/A
FireFox 48	N/A	N/A	N/A					
FireFox 47	N/A	N/A	N/A					
FireFox 46	N/A	N/A	N/A	N/A				
FireFox 45	N/A	N/A	N/A	N/A				
FireFox 44	N/A	N/A	N/A	N/A				
FireFox 43	N/A	N/A	N/A	N/A				
FireFox 42	N/A	N/A	N/A	N/A				
FireFox 41	N/A	N/A	N/A	N/A				
FireFox 40	N/A	N/A	N/A	N/A				
FireFox 38	N/A	N/A	N/A	N/A				

